

Improving Outcomes for Children with Additional Support Needs



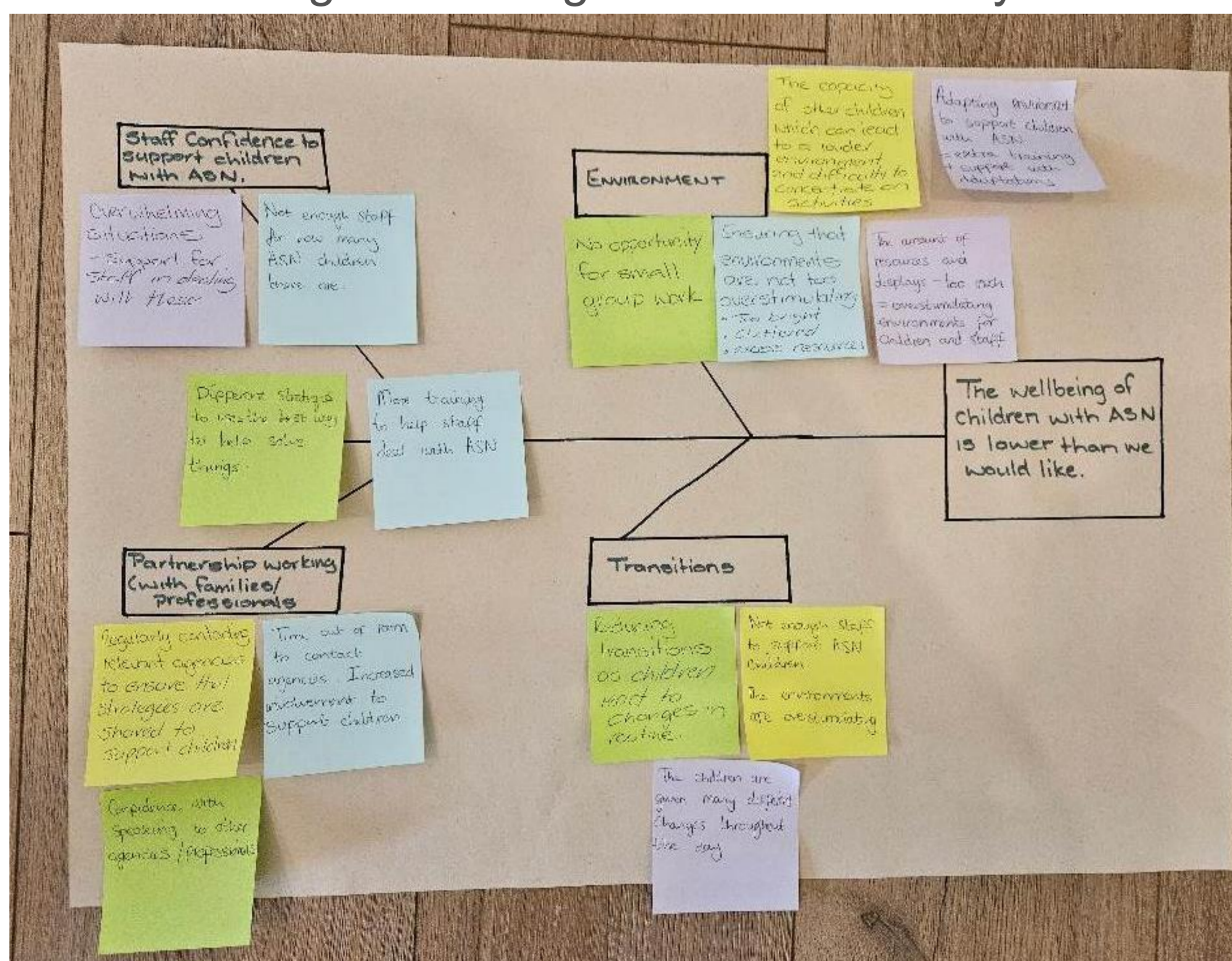
Beechwood House
 Mhairi Reid – Nursery Manager
 Camille Smith - Senior Early Years Practitioner

Aim

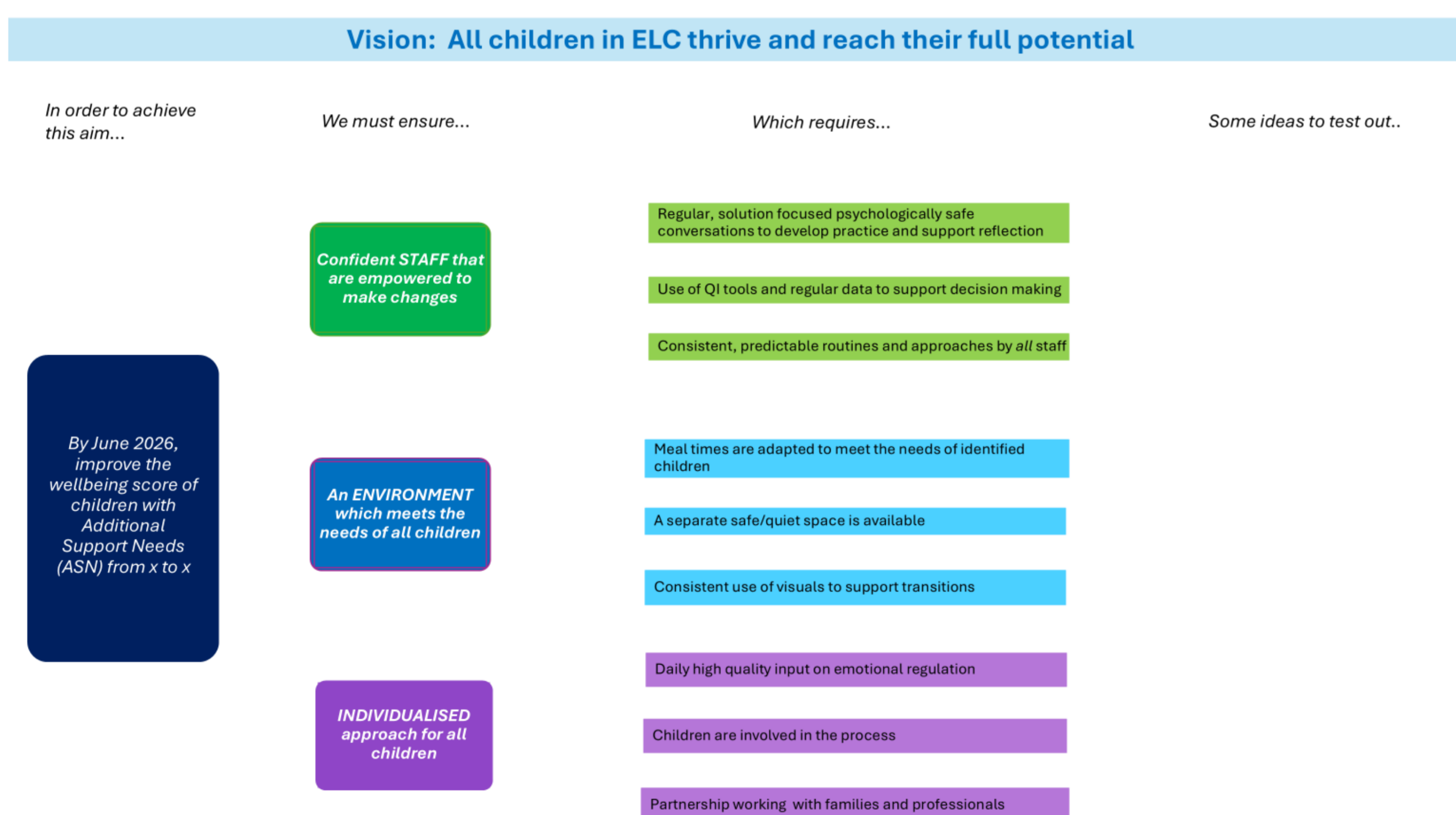
By April 2026, improve the average daily wellbeing score of children with additional support needs from 2 to 4.5 (using Leuven Wellbeing Scale)

Method

- Established an Improvement Team.
- Attended the East Ayrshire QI in ELC Programme.
- Began gathering daily data on children's wellbeing.
- Used run charts to track variation and progress towards our aim.
- Completed a fishbone tool to get to the root causes and identify change ideas
- Tested change ideas aligned to a secondary driver



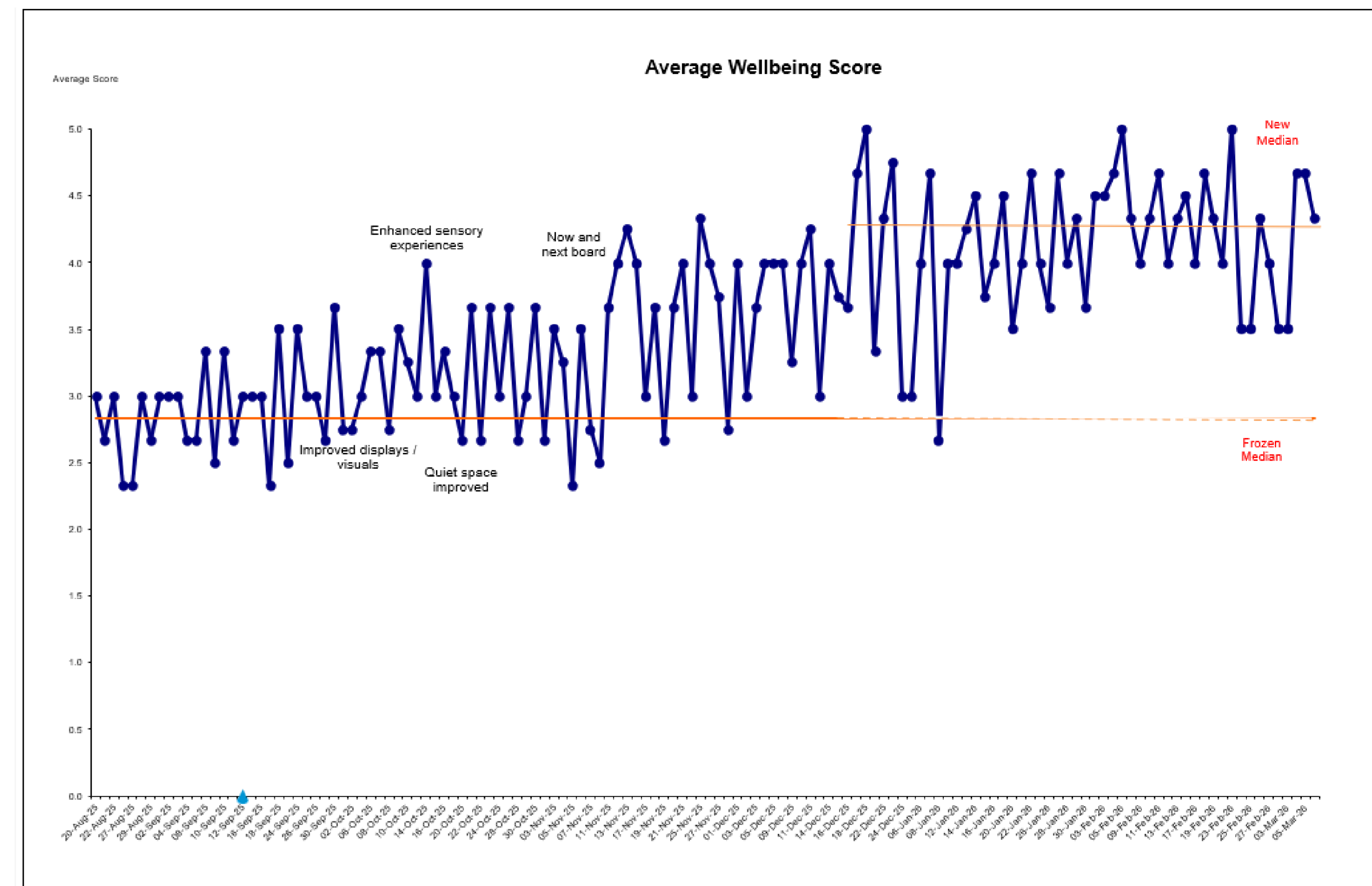
Our Change Theory



Change Ideas Tested

- Visual aids – photographs added to the room and now and next board.
- Improved nurture room environment – cosy area added with more sensory toys.
- Emotions display and visual aids to support children with identifying their emotions to boost self regulation.

Results



Conclusions

- We improved the average wellbeing of our children with additional support needs from 2 to 4.3!
- Collectively, all the small changes led to big improvements

Training has been very positive in focusing strategies e.g. visual aids and making improvements to areas to help support the children. This has had a great impact on the children's wellbeing with ASN.

Great care setting overall, Mhairi has been very helpful and great support. Camille, Lauryn and William have been great for my son, understanding his needs and growth.

Key Learning Points

- Testing out the tally counter to measure the children's enjoyment of their lunchtime.
- Using chalk to draw emotion faces and asking children to identify how they feel regularly.
- We have learned how data is important to demonstrate improvements made over a period of time.

Next steps

- Implement the tally counter boxes for lunchtime.
- Continue to consistently use visual aids.
- Provide more small group sessions to support regulation.